

The ARGO Series

Module Tape Cutting & Splicing

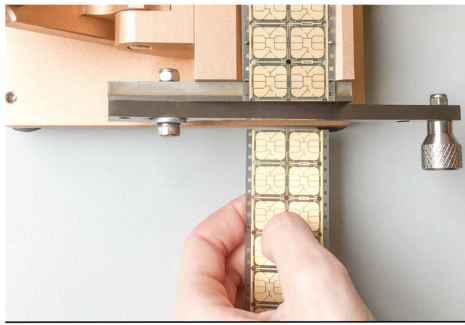
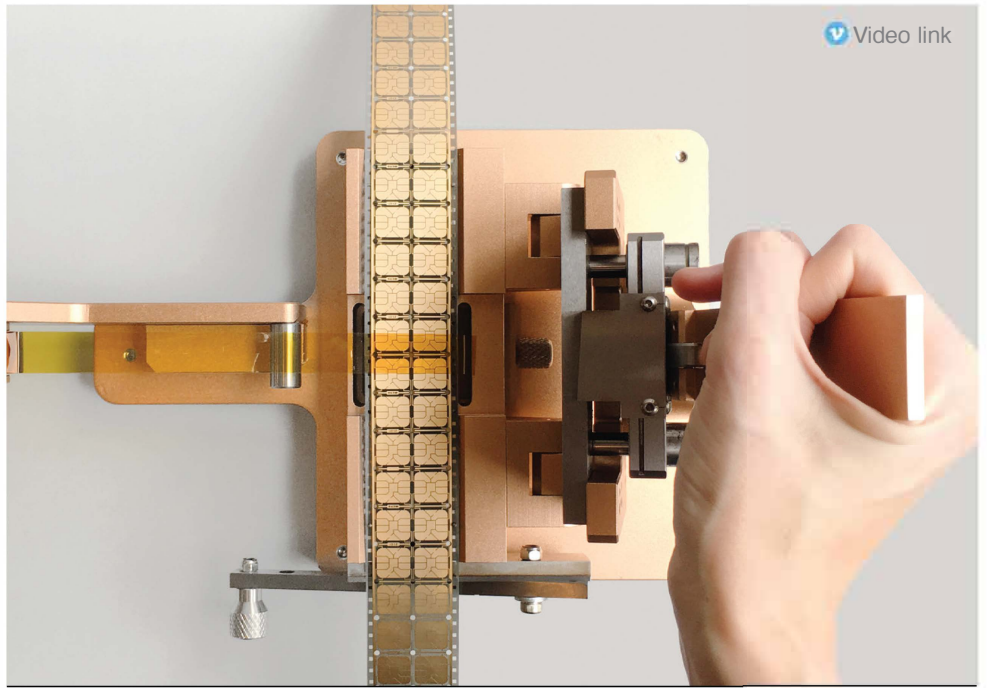
ARGO MTS-01

Module Tape Splicer

- Precision Cutter
- Tape Splicer

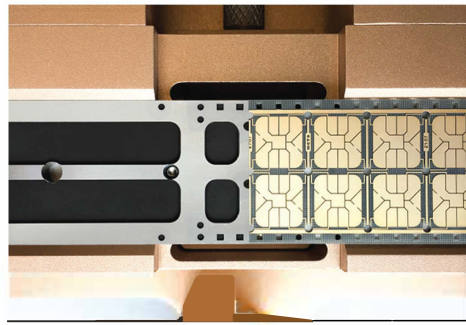
The MTS-01 is small mechanical device tailor-made to maximize your module tape inventory.

Designed for accurate, fast and easy splicing of module tape, this tool makes a quick job is of connecting two pieces of module tape together or attaching module tape to leader tape.



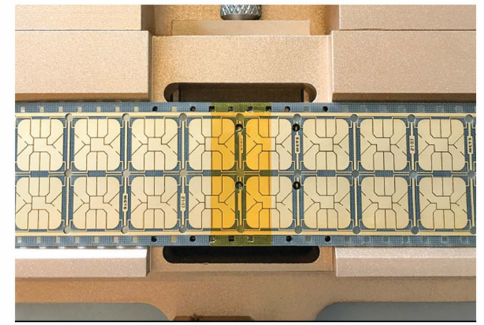
ARGO MTS-01

Cut



ARGO MTS-01

Place



ARGO MTS-01

Splice

The MTS-01 accuracy maximizes the potential of existing module stock and its ergonomic portable design makes module splicing accessible anywhere on the factory floor.

High quality tooling aligns modules, punches sprocket wholes in splicing tape, and punches reject wholes in the modules located at the splice point.

Available for standard M2 or M3 modules. Specify module type when ordering.

